

# SR-MT Installation Instructions v.4.1

Tools needed: 2) 7/16" Either sockets or open end wrenches, and 2) 9/16" Either sockets or open end wrenches



## MAIN COMPONENTS

- A Receiver Base
- B Adjustable Upright W/ Swivel Tab
- C 12" Support Arms
- D 2) Mountain Hooks
- E 2) Retainer Bracket

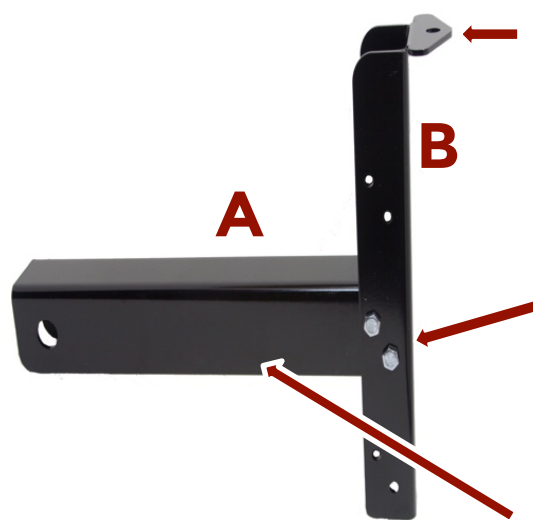
## FASTENERS

- 6) 1/4" x 3/4" bolts, nuts and lock washers
- 1) 3/8" x 1" bolt, washer and, lock nut
- 2) 2" PTO clips

Scan for  
SR-MT Installation  
Video >



## Step 1- Bolt the Adjustable Upright (B) to the receiver Base (A)

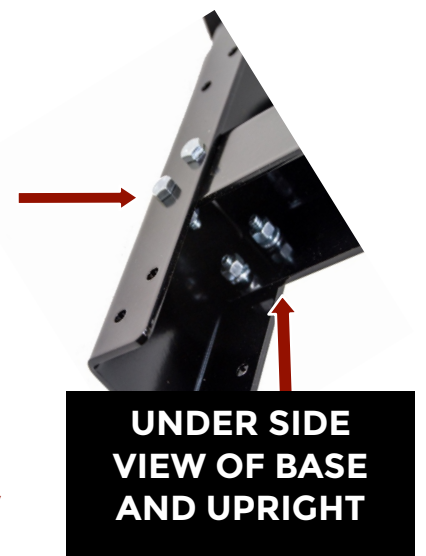


Adjustable upright channel will wrap around the receiver base and holes will line up. The top support arm mounting flange will be facing forward.

Attach the upright and receiver base using 4) 1/4 x 3/4" bolts, lock washer & nuts.

Adjustable upright will allow for 3 height settings. Height can always be reset for the best operating height. **We suggest height between 14"- 21" allowing for approximately 30% of the cans weight to be resting on the support arm, with a max of 75 LBS. weight on the arm per can.**

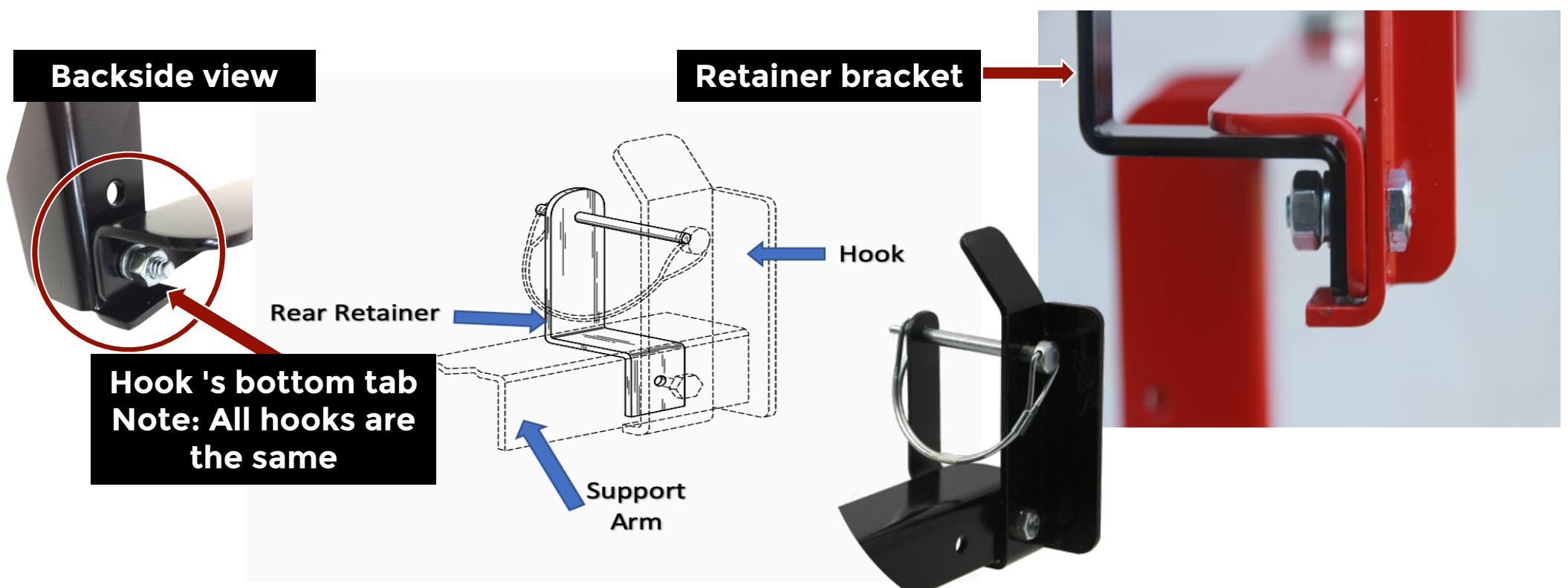
The receiver base (A) bends will go down, and slip into the adjustable upright (B)



## Step 2- Mount the two Mountain hooks and two retainer brackets to each side of the 12" support arm

There are two hook settings; the outer holes are 12" and the inside hole will be 9"

- Mount the two mountain hooks using the 1/4" x 3/4" bolts, lock washers and nuts
- Mountain hooks mount on the face of the support arm, the lower tab will wrap under the bottom edge of the support arm
- The rear retainer bracket installs behind and under the support arm
- **NOTE:** Push the retainer bracket tight to the underside so it will stay straight and in line with the hook
- Tighten the bolts so the hooks will not move



**Step 3-** Take the assembled upright and receiver base, and attach the support arm

Use the 3/8 x 3/4" bolt, washer and black lock nut to secure support arm to the swivel tab on top of the adjustable upright (B).

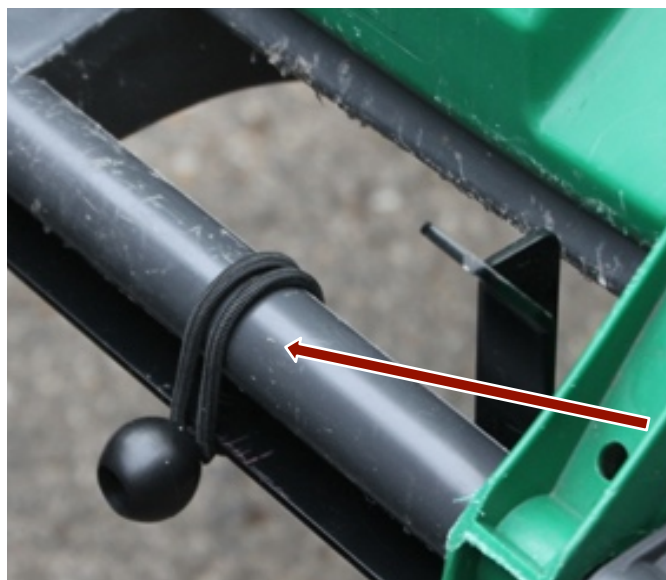


← Face of support arm, the assembled support arm should be installed with the angle bends facing backward and the support arm tab forward.

← Face of support arm: The assembled support arm should be installed with the angle bends facing backward and the support arm tab forward.

Make sure the 3/8" washer is between the swivel base and the support arm as a spacer.

**TIGHTEN SNUG**, so arm is not loose and moves harder, but can still pivot. Allowing the support arm to swivel on the base but not wobble.



When transporting your wheeled totes with steep or challenging grades, we recommend securing the handle using both PTO spring clips.



We also offer on our website ball hold down straps that are easy to apply and give extra holding if PTO clips are hard to use.

**\*\*Spring clip can be bent outward to make fastening easier.** →



**Warnings:**

- Keep all nuts tightened
- Do Not exceed 15 MPH, or 75 lbs.
- Do Not carry passengers
- Do Not use on public roads

Turn off vehicle and put in park before attaching your Garbage Hook.

**\*\*Garbage Hooks are designed for towing,  
DO NOT backup with cans attached. Damage may accrue\*\***

**Thank you for your order, as a small company we truly appreciate your business!**

If you have any questions or concerns with your order, call or text us at 608-607-2788  
Send an email to [info@garbagecommander.com](mailto:info@garbagecommander.com)

Before leaving a negative review, contact us, we promise to make things right with you.  
\*Help us grow by spreading the word and taking the time to leave a positive review.\*



**Garbage Commander by:**  
LaMalco LLC - 2709 N. Burdick Rd. Janesville, WI. 53548  
Garbage Hooks are patented and made in the USA.  
Patent US 9,789,741 B1 & D888,644S